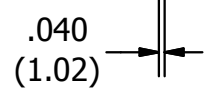
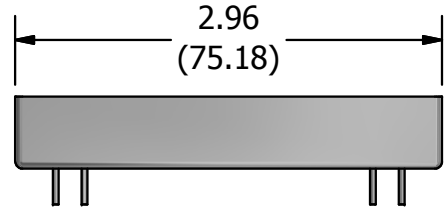
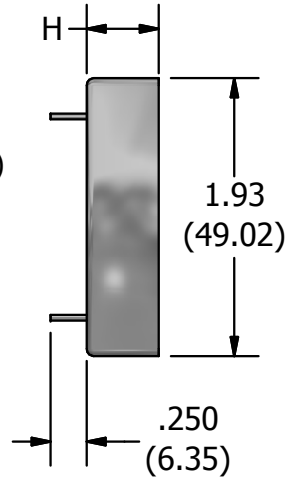
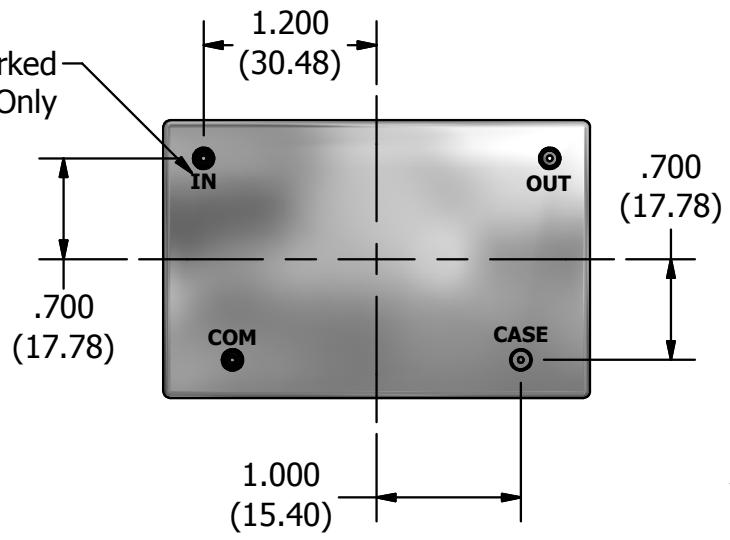


| Case No. | H |
|----------|--------------|
| 15 | .500 (12.70) |
| 16 | .750 (19.05) |
| 17 | 1.25 (31.75) |



Pins Are Not Marked Reference Only



- Notes:
- At cut-off frequencies and center frequencies < 300kHz and when the filter impedance is >300Ω the case pin and common pin are isolated.
 - When the frequency is >300kHz or the filter impedance in <300Ω the case and common pins are connected internally and are a common-case connection.
 - Material: Cold Rolled Steel
 - Dimensions: inches (mm)
 - Finish: Fused tin plate over copper plate per Mil-C-14550
 - Do Not Scale Drawing

| | | | | | |
|-------------|---------------|--------------------|---------------------------|----|----------|
| CAGE CODE | DRAWING # | LTR | REVISION | BY | DATE |
| 07766 | OL 15,16 & 17 | 1 | Combines Dwgs 15, 16 & 17 | RF | 12/17/08 |
| Description | | Case 15, 16 and 17 | | | |
| DRAWN BY | JE | Approved By | ENG | QA | MFG |
| | | | | | 5/21/14 |

Unless otherwise specified dimensions are in inches. Tolerances on
 XX ± .010
 XXX ± .010
 XXXX ± .010
 Angles ±
 Fractions ±

This drawing or specification is the property of TTE LLC. Copies shall not be reproduced or copied or used as the basis for the manufacture or sale of apparatus without permission.



11652 West Olympic Blvd.
 Los Angeles, Ca 90064-1400
 Phone Number: (310) 478-8224
 Website: www.tte.com